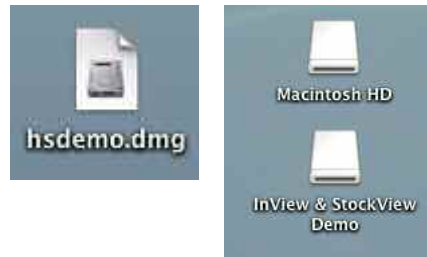


I N V I E W & S T O C K V I E W 5 D E M O I N S T A L L A T I O N

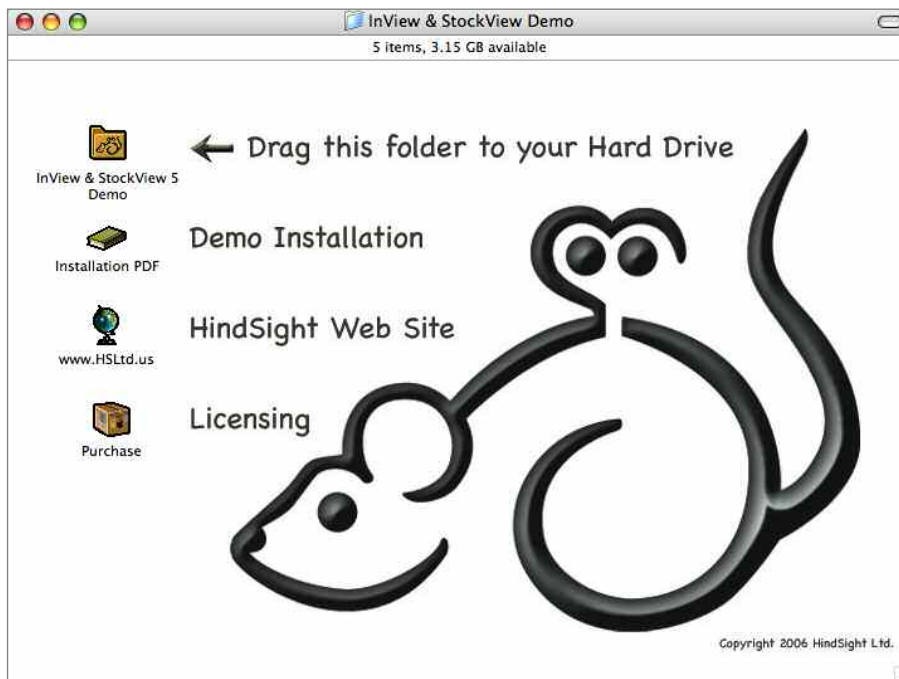
Installation of the InView & StockView 5 demo takes only a few seconds.

When downloaded, a file named "hsdemo.dmg" is saved to your hard drive. You can double click to open it, but in most cases your Macintosh automatically mounts it.

When mounted, a disk image appears.



The contents of the disk image should look like the display below.



Click on the InView & StockView 5 Demo folder and drag it onto your hard drive.

Where? You can simply drag it onto the hard drive and leave it right there or you can drag it further, to the Desktop or to your Applications folder.

The most important thing is that you know where you put it in order to find it again.

At this point, you can use the Eject command, located in the File menu on your Macintosh Desktop to clear the InView & StockView Demo's disk icon from the Desktop.

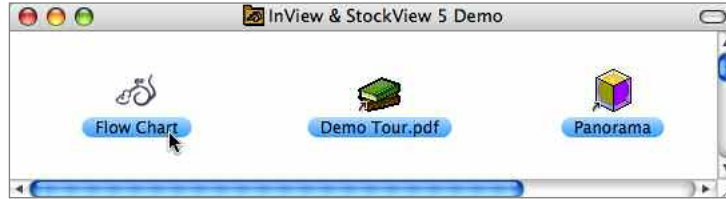
The hsdemo.dmg can be saved for future reference or it can be deleted.

To completely remove the demo from your hard drive, drag the very same InView & StockView 5 Demo folder from your hard drive to the Trash.



R U N N I N G T H E D E M O

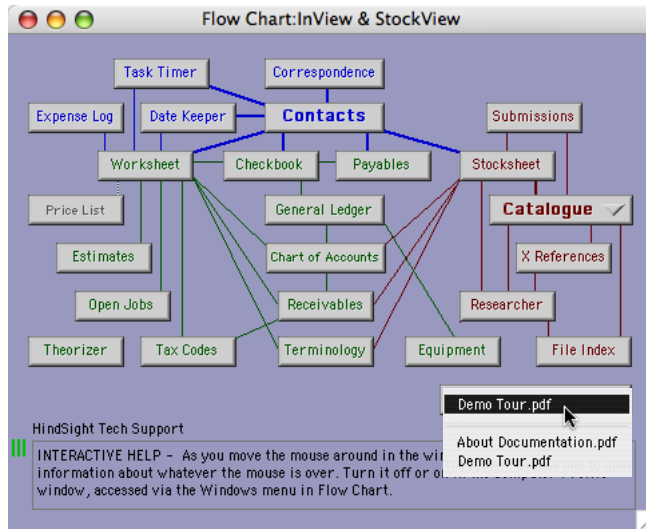
To start using the demo, open the InView & StockView Demo folder that you dragged onto your hard drive and locate the file named Flow Chart. Double click on Flow Chart to launch it.



Note: When first installed, it's not unusual for your Macintosh to not know about the proper application to be used for InView & StockView. If you get a message asking you to select the application, just Cancel the process. Drag Flow Chart onto the Panorama icon and the correct associations will be established.

Once Flow Chart opens, you're in the navigational center of InView & StockView. This is a great place to begin your tour, but please don't overlook the Demo Tour.pdf in order to have some guidance on your exploration.

Macintosh Tip:
 You can drag Flow Chart, or any other InView & StockView file, onto the Dock to create a quick access. OS X requires that it be placed on the same side of the divider line as the Trash.



The Demo Tour.pdf is available from within the demo folder, but better still, in Flow Chart click on the popup menu named Online Documentation.

Most features in the demo are fully functional. You may encounter and occasional message that the demo can't do that, or see DEMO added to some printed pieces.

The licensed program can handle TIFF, JPEG, PSD, PICT and many other image formats. The demo is limited to only display PICT images.

Thank you for taking a look at InView & StockView.

To purchase a license, you can buy it online and have it immediately via our web site at: <http://www.HSLtd.us/products/purchase.html>

Or phone our sales desk at 888-791-3770 or 303-791-3770, Monday through Friday from 9 to 5 Eastern Time in the United States.