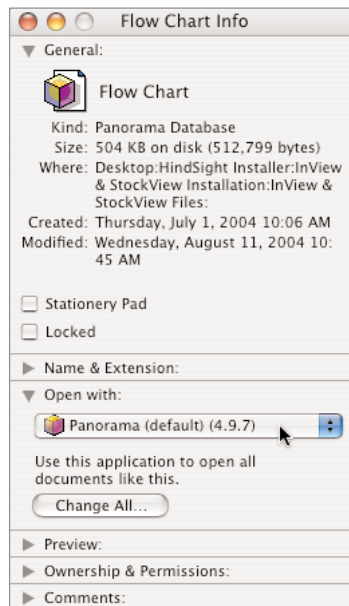
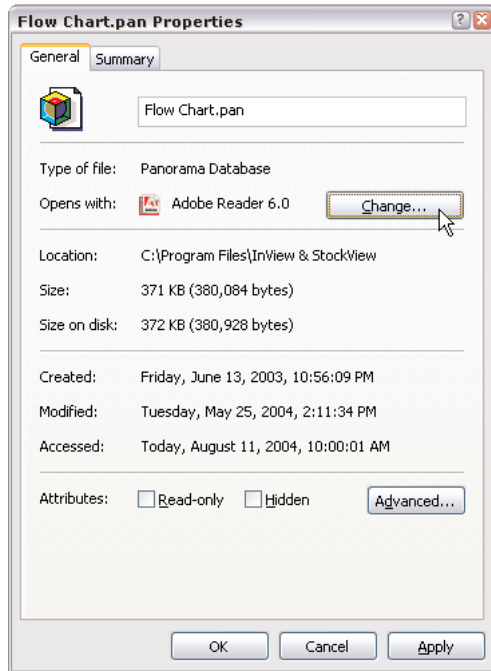


# SET THE APPLICATION

On both Macintosh OS X and Windows you can tell the system what application is to be used to open a file. This is useful when launching a file from the Desktop, such as Contacts, Catalogue or Flow Chart, doesn't get the file opened in Panorama. You may get a message that the application was not found or is missing, or the system may try to open the file with another application.

On Macintosh OS X, highlight a file such as Flow Chart and choose Get Info from the File menu. Under Open With: locate and choose your latest version of Panorama. Then click on the Change All... button so all the other Panorama files will also open with this same choice.

On Windows, right click on a file, such as Flow Chart, and choose Properties. In the Properties window, click on Change then locate and choose your latest version of Panorama.



In both scenarios, launching InView & StockView files from the Desktop or from Aliases or Shortcuts, the system software will now make the proper association and open the files using the Panorama application.

Note: On both the Macintosh and Windows platforms this same process can be used to set image files to open with PhotoShop, pdf files to open with Acrobat and so on.

Copyright 2004 HindSight Ltd.

All Rights Reserved

<http://hsltd.us>

