

# WINDOWS INSTALLATION METAMACHINE

Installation of METAmachine is quite easy if you know what to expect and follow these steps. It should require no more than a couple of minutes.

**Be sure that you're logged in as Administrator.**

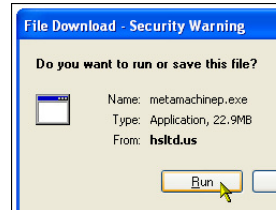
*Note*  
It is necessary to have the free Apple QuickTime software installed. See <http://www.apple.com/quicktime/download/>

## DOWNLOAD THE SOFTWARE

To download METAmachine, click on the Windows link at <http://HSLtd.us/metamachine/download.html>



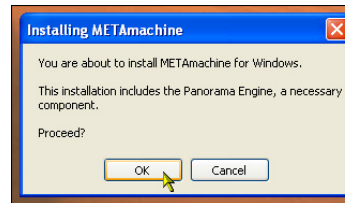
Before the download begins, a window should appear asking if you want to Run or Save the download. In most cases Run is the choice you want to make.



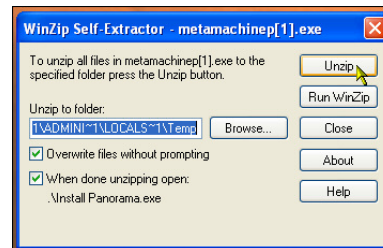
When the download has completed, a warning appears regarding the "unknown publisher". Click on Run in order to continue.



The installer starts by confirming the package that you are about to install.



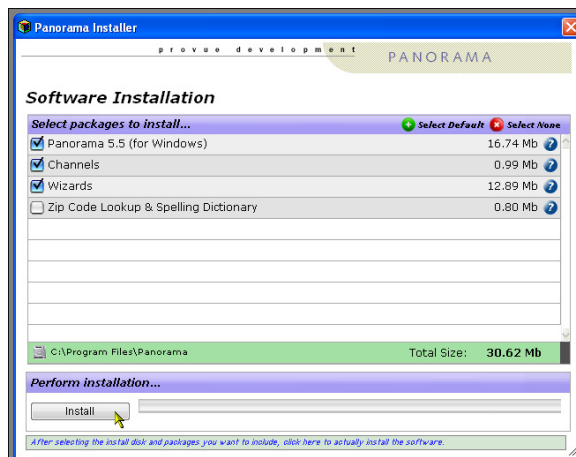
The software then Unzips to your hard drive. It's advised to allow it to use the default settings which sends the installation to your Temp folder.



Once the files are unzipped, there will be a momentary pause after which the Panorama Installer opens on your screen.

Again, we suggest using the default settings for the best results. This will install a Panorama folder in your Program Files folder. (Panorama is the underlying database engine that runs METAmachine and an included part of your licensed package)

Click on Install and both Panorama and METAmachine are installed on your hard drive.

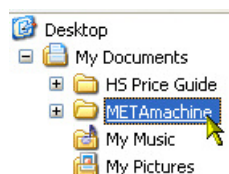


*Note*  
The Panorama engine is installed into your Program Files folder. METAmachine itself is installed in your Documents folder (My Documents). If the installer does readily find your Documents folder it will ask you to select the location.

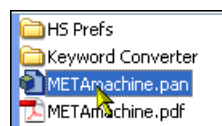
The installer tells you when the Installation is Complete, then Quits.

## F I R S T   U S E

Locate the newly installed METAmachine folder. If you installed it as suggested, it's inside your My Documents folder.

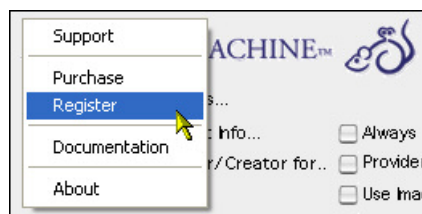


Inside that folder, locate the file named METAmachine and double click to launch it. (See our *Shortcut tip in the Final Notes below*)



If you've purchased a license for METAmachine, click on the METAmachine name or logo for a popup menu and choose Registration to enter the Registration Code you received in your emailed receipt.

Notice that the METAmachine Documentation is also accessible in this popup menu.



## F I N A L   N O T E S

**To add a Shortcut to your Task Bar**, right-click on METAmachine.pan within its folder and drag it to the Task Bar. Then choose Create Shortcut from the options that pop up.

PDF Documentation, is accessible via the Logo's popup menu

Support for METAmachine is available for free via our online forums, accessed by choosing Support in the Logo's popup menu

There is no need to register Panorama or enter any registration information for it in order to use it with METAmachine. METAmachine has a built-in license for Panorama.

If you have InView & StockView, or components of either, you can move METAmachine from its folder to that folder. Up to date versions of Flow Chart will recognize and respond to its presence. Place the METAmachine.pdf in the InView & StockView documentation folder and add the contents of METAmachine's HS Prefs to the like-named folder with InView & StockView.

To Delete METAmachine from your computer, right-click on the METAmachine folder and chose Delete. Then do the same with the Panorama folder. No further action is necessary.